

MIRA

villanova



A fabulous crushed velvet with a luxurious pile that is soft to the touch. Wonderfully sensual for drapes, Mira is also immensely durable for upholstery. This sumptuous velvet has been coloured in an array of shades that include rich jewel-like tones, striking teals and blues through to a selection of easy to use neutrals.



Russet
V3224/31



Neptune
V3224/13



Pigeon
V3224/04



Eucalyptus
V3224/03



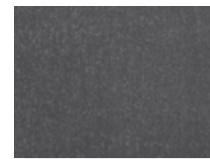
Heron
V3224/20



Fountain
V3224/16



Shaker
V3224/05



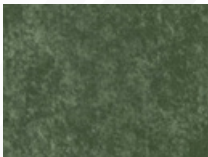
Carbon
V3224/06



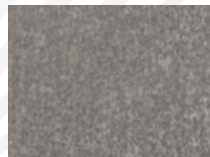
Hydro
V3224/15



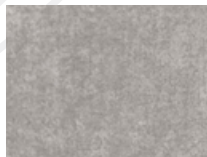
Onyx
V3224/07



Oregano
V3224/17



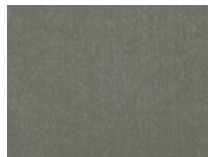
Earth
V3224/23



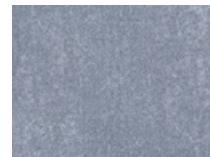
Mouse
V3224/01



Starfruit
V3224/19



Slate
V3224/02



Dolphin
V3224/11



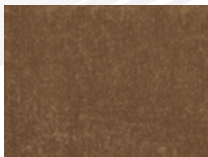
Husk
V3224/35



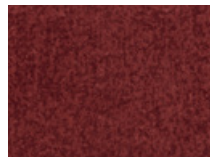
Lapis
V3224/37



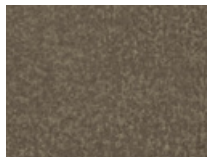
Harbour
V3224/12



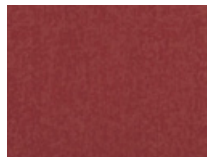
Treacle
V3224/32



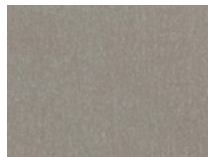
Garnet
V3224/26



Clove
V3224/33



Rouge
V3224/30



Shale
V3224/22



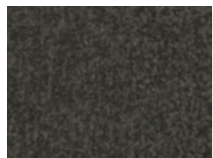
Chard
V3224/29



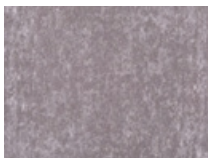
Mole
V3224/24



Nightshade
V3224/10



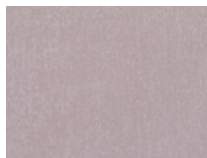
Pepper
V3224/25



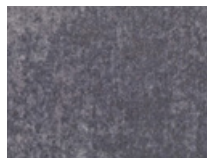
Heath
V3224/27



Eggplant
V3224/08



Waterlily
V3224/28



Burdock
V3224/09